

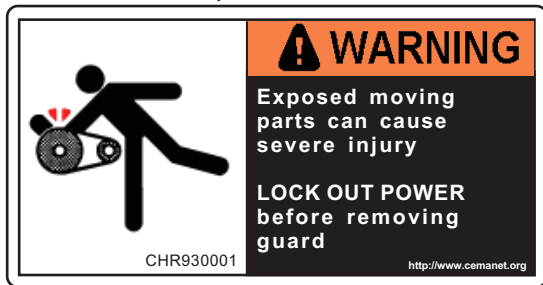
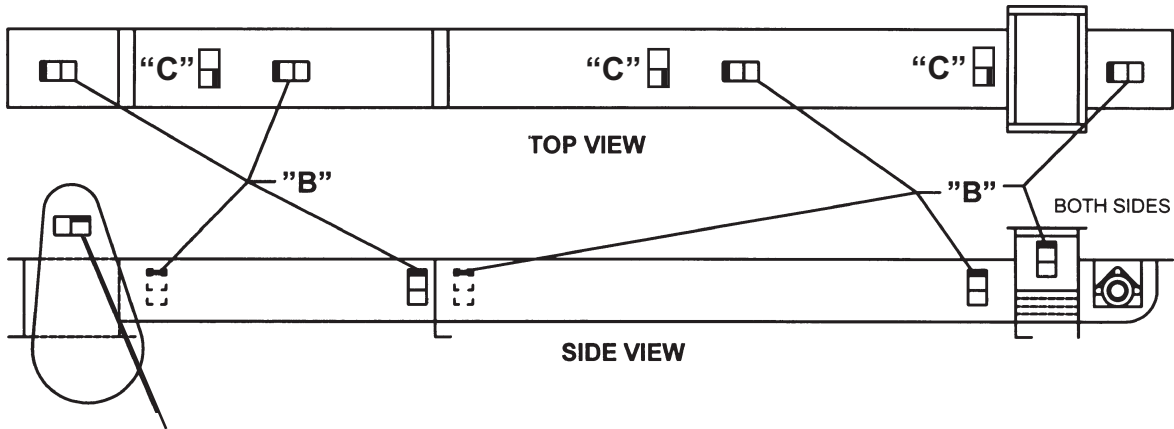
CEMA Safety Label Placement Guidelines

CEMA Safety Labels

Placement Guidelines

Product: Bulk Handling Equipment

Equipment: Drag Conveyors



"A"

To be placed on inlets and discharges, troughs, covers, and inspection doors of screw conveyors to provide warning against exposed moving parts while in operation.

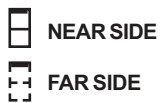
To be placed on removable guards to warn that operation of the machinery with guards removed would expose chains, belts, gears, shafts, pulleys, couplings, etc. which create hazards



"C"



"B"



USE LABEL "A" ON BELT GUARD
USE LABEL "B" ON ENDS OF TROUGH, MIDDLE OF COVERS AND AT INLET OPENING.
USE LABEL "C": ON TOP OF COVERS