

PROVIDING HIGH PERFORMANCE BULK MATERIAL HANDLING SOLUTIONS SINCE 1932



THE EXPERIENCE
TO HANDLE IT RIGHT!®

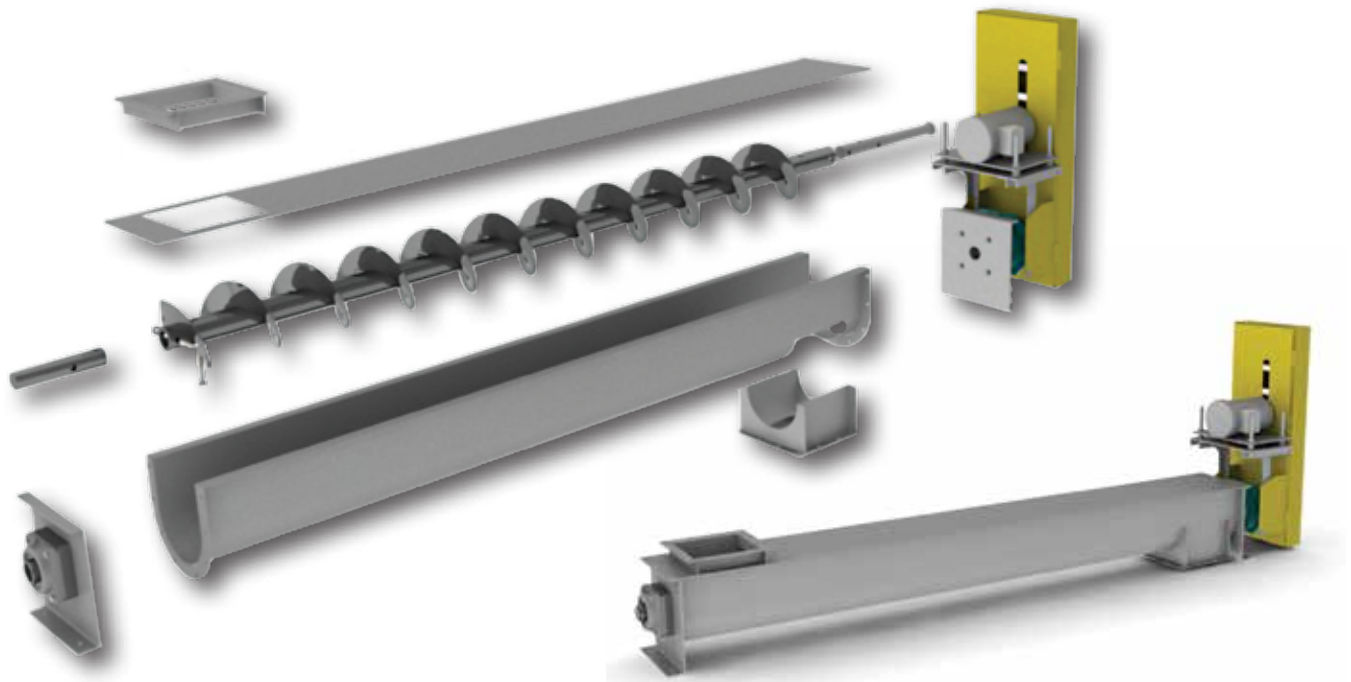
Screw Conveyor Corporation®

Since 1932

SCREW CONVEYORS

Archimedes had a great idea with his conception of the screw. Screw Conveyor Corporation took that concept and perfected screw conveyors that are easy to install, simple to maintain, and adapt easily to transporting bulk materials in a broad range of applications. Quality screw conveyor systems and components are available in a wide range of designs and materials. We can meet your application needs in Helicoid and Sectional Flights or with adaptations including ribbon, special pitch or tapered.

Various gauges of steel, stainless steel, hardened flight surfaces and other alloys are also available. Screw Conveyor Corporation carries a large inventory of standard parts and modular packages to resolve specific CEMA component failure or full system replacement. From CEMA Standard products to engineered material handling solutions – Screw Conveyor Corporation is ready to help you.

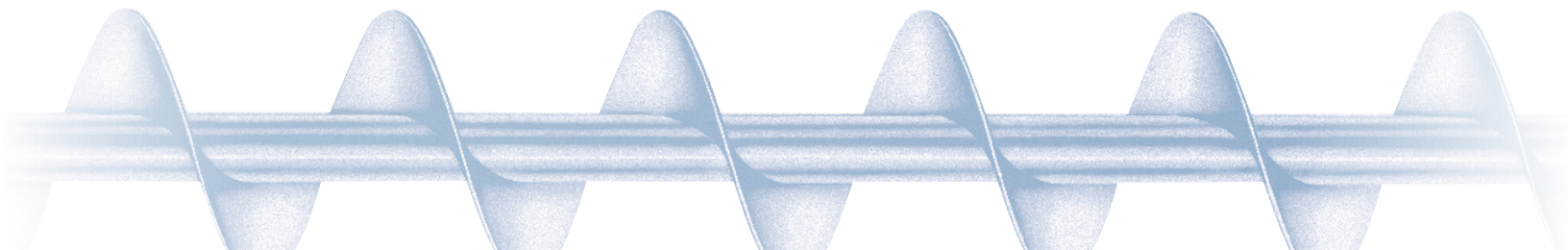
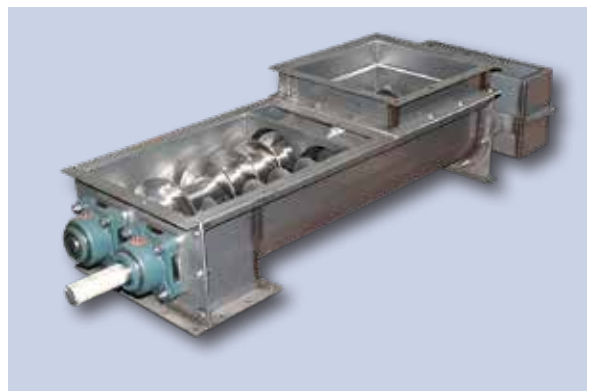


Screw Conveyors: Material must be control fed to the Screw Conveyor

CEMA Standard Diameters	6–24 in.
Non-CEMA Units	30 in. and 36 in.
Typical Length Range	Up to 150 ft.
Incline	0–45°
Typical Capacities	Up to 18,000 cu ft./hour

Screw Feeders: Used to regulate material flow from a hopper or choke load condition

Standard Diameters	6–24 in.
Typical Length Range	5–20 ft.
Incline	0–15°
Typical Capacities	Up to 18,000 cu ft./hour



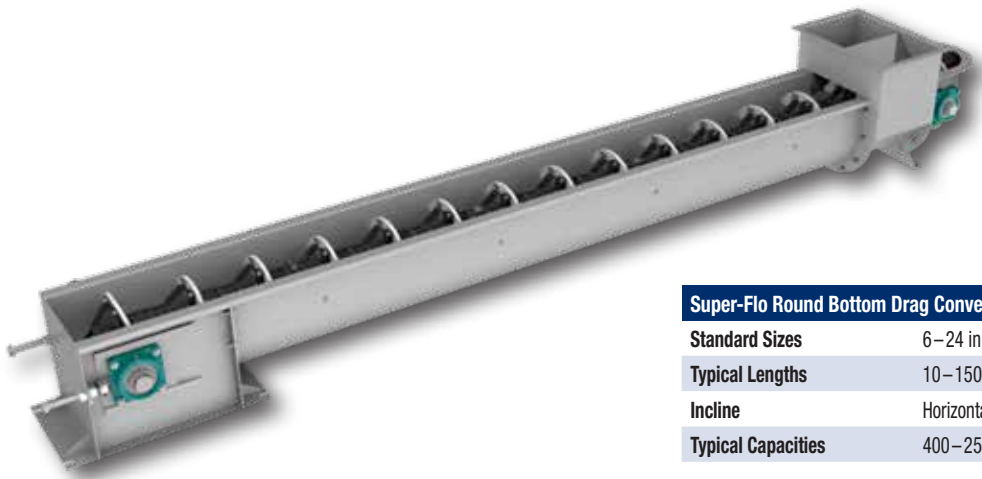
DRAG CONVEYORS

SCREW CONVEYOR CORPORATION HAS BEEN SYNONYMOUS WITH DRAG CONVEYOR DESIGN AND ENGINEERING FOR OVER 50 YEARS.

SUPER-FLO®

The Super-Flo Drag Conveyor was first conceived, and then patented by SCC to provide customers with a high capacity, non-agitating, self-cleaning conveyor that possessed low energy requirements. A properly configured Super-Flo can be designed to

economically and effectively move bulk materials in both horizontal directions as well as on an incline with low product degradation. The Super-Flo also keeps dust contained and is a solid, durable solution for conveying a broad range of materials.

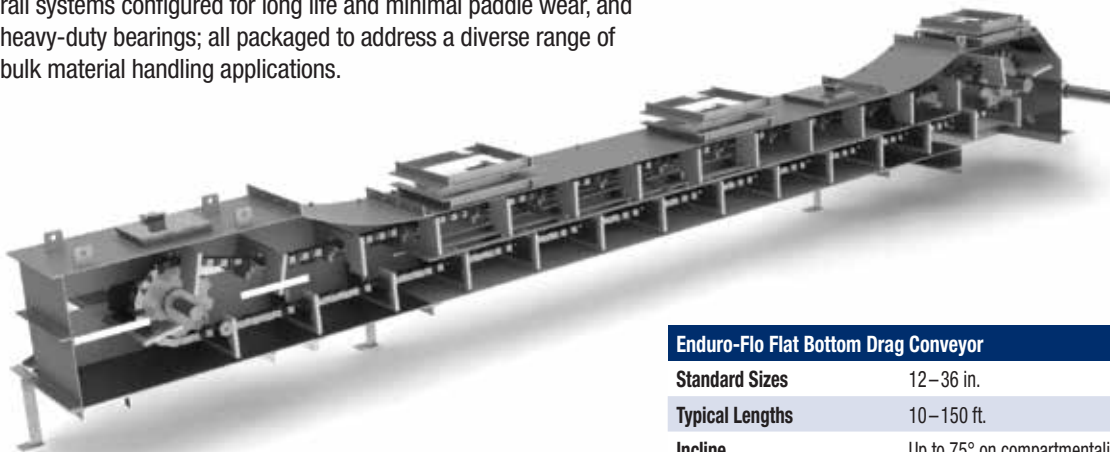


Super-Flo Round Bottom Drag Conveyor

Standard Sizes	6–24 in.
Typical Lengths	10–150 ft.
Incline	Horizontal to 30°
Typical Capacities	400–25,000 cu ft./hour

ENDURO-FLO®

The tradition of excellence continues today with the Enduro-Flo. This solution is a robust design built to handle higher capacities. The unit is designed with bolt-on bottoms, easily replaced return rail systems configured for long life and minimal paddle wear, and heavy-duty bearings; all packaged to address a diverse range of bulk material handling applications.



Enduro-Flo Flat Bottom Drag Conveyor

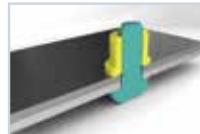
Standard Sizes	12–36 in.
Typical Lengths	10–150 ft.
Incline	Up to 75° on compartmentalized units
Typical Capacities	3,000–42,000 cu ft./hour (horizontal units)

All units displayed must be operated with a cover.

BUCKET ELEVATORS

Our bucket elevator line centers around models that range in capacity from 300 to 25,000 cu ft./hour, typically single-trunk design, with heights of approximately 100 feet or less. We have designed and manufactured elevators to much greater heights and capacities and do so on a case by case basis. SCC elevators, whether centrifugal or continuous design, are built with meticulous attention to detail and your job-specific requirements. SCC's Huck® bolted casing sections allow for easy assembly, consistent structural connection, and time saving erection. The result is a superior elevator housing.

SCC's engineering expertise and design capabilities enable us to manufacture Super Capacity and Mill Duty Elevators. Work with your regional SCC Representative or local Distributor to review and communicate your specific details to our industry leading team of application engineers.



Huck® bolted casing

Centrifugal & Continuous Bucket Elevators	
Typical Discharge Heights	10–100 ft.
Typical Capacities	300–12,000 cu ft./hour (industrial environments) 1,000–25,000 cu ft./hour (agricultural environments)



Huck® is a registered Trademark of Huck International, Inc.

Reference Chart for Grain Handling Solutions

Equipment	Capacity	Incline	Product Degradation	Application	Particle Size	Length/Height
Screw Conveyors	Up to 14,000 bushels/hour	0–45°	High	Non-abrasive to abrasive	Small to medium	3–150 ft.
Screw Lifts	Up to 2,400 bushels/hour	Vertical	High	Non-abrasive to low abrasive	Small to medium	9–50 ft.
Round Bottom Drag Conveyors	Up to 20,000 bushels/hour	0–30°	Low	Non-abrasive to medium abrasive	Small to medium	10–150 ft.
Flat Enmasse Drag Conveyors	Up to 33,600 bushels/hour	0–5°	Low	Non-abrasive to medium abrasive	Small to medium	10–150 ft.
Compartment Drag Conveyors	Up to 20,000 bushels/hour	0–75°	Low to medium	Non-abrasive to medium abrasive	Small to medium	10–150 ft.
Bucket Elevators (Legs)	Up to 20,000 bushels/hour	Vertical	Low to high	Non-abrasive to highly abrasive	Small to large	12–120 ft.

SCREW CONVEYOR CORPORATION

YOUR PARTNER IN CONVEYING AND ELEVATING BULK MATERIALS

- *Project estimating & application teams*
- *Engineering solutions: designed & detailed*
- *Strategically located manufacturing sites*

- *Experienced, well-qualified representative organization backed by SCC application team and engineers*

- *Stable, well-tested organization*
- *Established in 1932*
- *Wealth of application knowledge*

CONTACT US

700 Hoffman Street, Hammond, IN 46327-1894
Phone 219-931-1450

www.screwconveyor.com

Winona, MS
P: 662-283-3142

Visalia, CA
P: 559-651-2131

Guadalajara, México
P: 333-645-7110



**Performance proven industrial
bulk material handling
equipment for almost a century.**

Technology, reliability and craftsmanship are the keys to almost 100 years of continued growth. Today, we're one of the nation's oldest manufacturers of bulk material handling equipment-including screw conveyors, drag conveyors, vertical lifts and bucket elevators. At Screw Conveyor Corporation we stand behind everything we specify, manufacture and sell...From complete customized bulk material handling equipment to replacement parts.

*We offer these guarantees because we have...
"The Experience to Handle it Right!"*



Proud Member of



**THE EXPERIENCE
TO HANDLE IT RIGHT!**

Screw Conveyor Corporation®

Since 1932

700 Hoffman Street, Hammond, IN 46327-1894
Phone 219-931-1450

www.screwconveyor.com

Winona, MS
P: 662-283-3142

Visalia, CA
P: 559-651-2131

Guadalajara, México
P: 333-645-7110